

100/200AC+ EDITION Upgrade Kit UPGRADE MANUAL

Thank you for selecting TOPCON product.

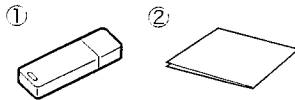
OUTLINE

By this kit, the standard Auto pointing model Total Station*1 can be upgraded to the Auto tracking model.*2 Also, it can be put upgraded Total Station back to the standard Total Station if necessary.*3
For details, refer to 100AC+ ADDITIONAL FUNCTION MANUAL or 200AC MANUAL depending on your model.

- *1: The software of the Total Station should be 100AC+ Ready version or 200AC+ Ready version. For details of the models, ask your local dealer.
- *2: Each USB memory has a unique ID code, and the USB memory can upgrade only one instrument.
- *3: The same USB memory which is used for upgrading is required to put the instrument back to the standard edition.

STANDARD PACKAGE COMPONENTS

Upon opening, make sure that all the following are included.



- ① USB Memory (Upgrade program and manual*4) 1
- ② Upgrade manual 1

*4: Only 100AC+ ADDITIONAL FUNCTION MANUAL is included in the USB Memory of Upgrade Kit. 200AC MANUAL is provide with the instrument.

UPGRADE/DOWNGRADE PROCEDURE

Upgrade procedure

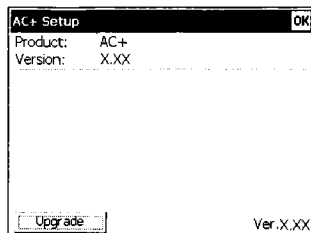
1. Turn off the total station.
Insert the USB memory into the USB port 1.

2. Press {F1} while pressing {F2} and {F3} to launch the total station in Update mode.

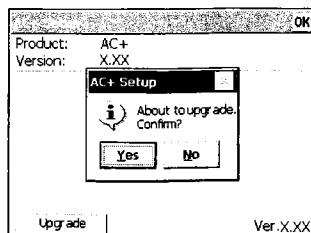


- When the message "This product does not support the installed software version in instrument." is displayed, firmware update is necessary. Contact your local dealer.

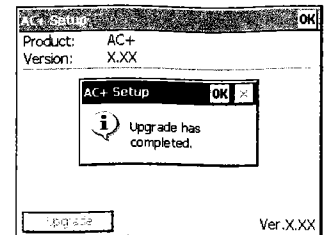
3. Press [Upgrade].



4. Press [Yes] in the confirmation dialog.



5. A message is displayed when upgrade completed.



6. Press [OK], then press {ESC} to exit the program.
Total station boots up automatically.

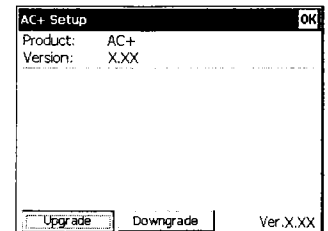
7. Turn off the total station and remove the USB Memory.

Downgrade procedure

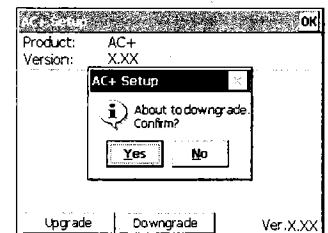
1. Turn off the total station.
Insert the USB memory into the USB port 1.

2. Press {F1} while pressing {F2} and {F3} to launch the total station in Update mode.

3. Press [Downgrade].



4. Press [Yes] in the confirmation dialog.



5. A message is displayed when downgrade completed.

6. Press [OK], then press {ESC} to exit the program.
Total station boots up automatically.

7. Turn off the total station and remove the USB Memory.



- When upgrading/downgrading fails, repeat until completed successfully.
- The total station and the USB memory which is used for upgrading is the pair. When downgrading, use the same USB memory.

TOPCON CORPORATION

75-1 Hasunuma-cho, Itabashi-ku, Tokyo 174-8580, Japan <http://www.topcon.co.jp>
Please see the following website for contact addresses.

GLOBAL GATEWAY <http://global.topcon.com/>

©2013 TOPCON CORPORATION
ALL RIGHTS RESERVED