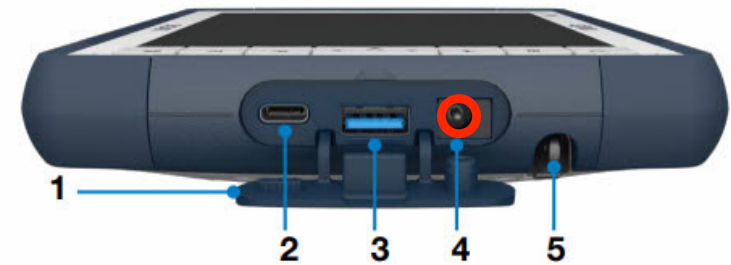


SHC6400 Battery and Power Management

First time charging, power management and maintenance.

Charging for the first time

- The SHC6400 includes a rechargeable removable Li-ion battery pack, which is pre-installed in the SHC6400.
- **Before powering on for the first time** charge the battery at room temperature with the AC wall charger included with SHC6400 **AC Wall charger**.
- Attach the appropriate charger plug to the wall charger (included).
- Plug the other end of the Wall charger into the DC power jack. When using the included charger the batteries cannot be overcharged,.
- When charging the red LED on the front of the SHC6400 blinks. When fully charged the red LED is solid and does not blink.



1. **Connector port protector**
2. **USB-C Port USB A Port**
3. **USB-A**
4. **Power Input jack**
5. **Storage Slot for hard tip stylus**

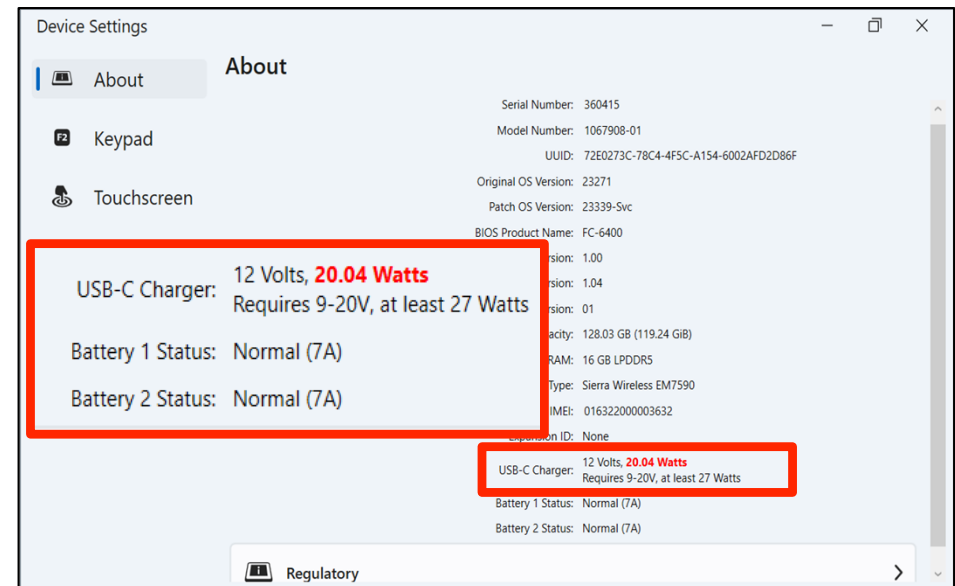


Using a USB-C Charger

USB –C charger must deliver 9-20 V. with a minimum 27W and can be charged using a computer or USB-C wall charger.

If the USB-C charger is not sufficient to charge the SHC6400 an error message is displayed.

- To view the charger's voltage and watt delivery, **Tap Learn More**
- In this example the charger being used does not meet the watt requirement.

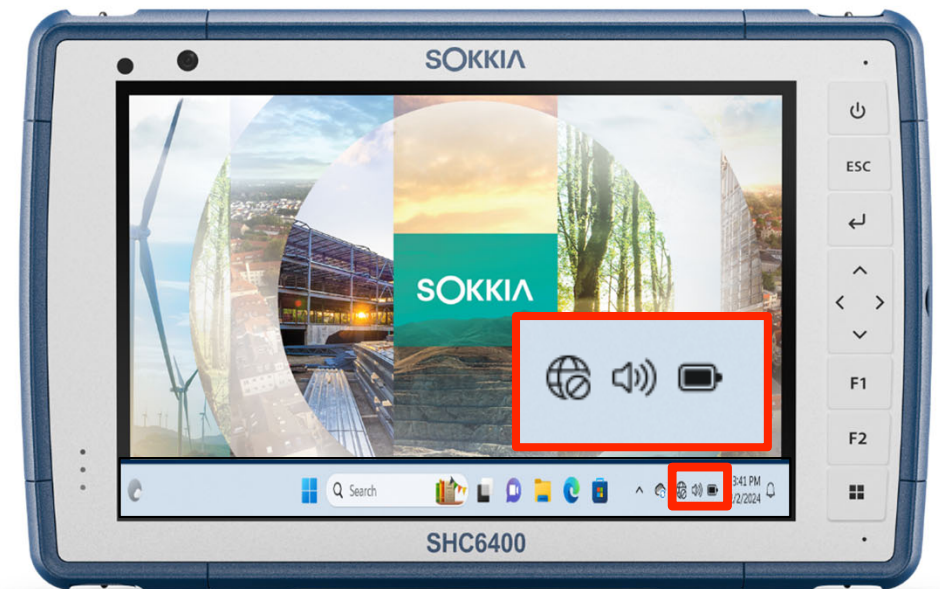
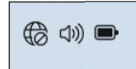


Charging the Battery Packs


- The SHC6400 runs on battery power and uses two rechargeable Li-ion battery packs. One battery is removable, the other is an internal, non-removable battery.
- Charge the battery packs with the AC wall charger that came with the controller or a USB-C charger.
- The intelligent battery charging circuit charges the battery pack with the least amount of energy first.
- When this battery pack reaches the same level as the other battery pack, both batteries are charged at the same time until both are fully charged.
- When charging the red LED on the front blinks and is solid when fully charged.
- The Battery packs charge most efficiently at room temperature and may not charge in extreme temperatures.
- Battery Charging Temperature Specifications per user manual: 32°F to 122° F (0°C to 50°C)

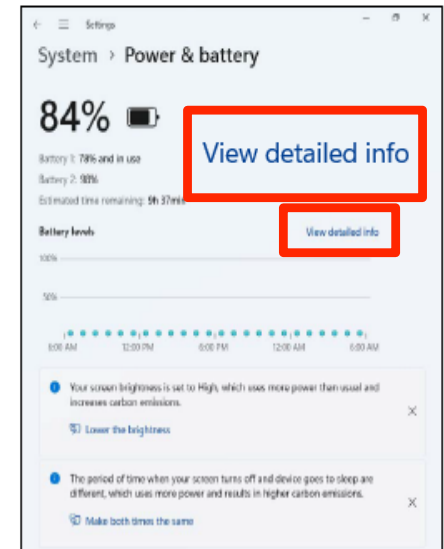
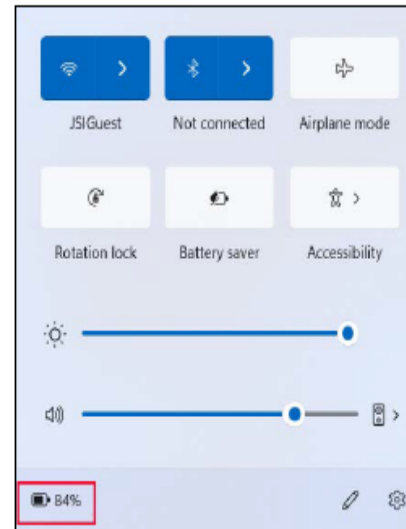
Battery status and management

- To view the battery life, Tap the Network, Sound or Battery icons on the lower right side of the task bar.



Battery status and management

- The Connection status menu is opened.
- **Tap the battery icon**  at the lower left corner of the window open the System Power & battery detail.
- The Battery 1 and Battery 2 power levels are displayed as well as battery usage levels.
- **Tap the View detailed info** text to see battery usage levels.
- If the battery reaches a very low charge, the SHC6400 will hibernate to prevent further drain on the battery.
- **To exit hibernation**, charge the battery until the charge is sufficient to power the tablet then press the power button.



Battery status and management

- If the battery is depleted and the SHC6400 is running on external power, this message appears.
- Keep the charger connected or shut down the controller until the battery charge is sufficient.

- After the battery is charged enough to power the SHC6400 you can disconnect the charger.

Warning! Keep the charger connected or shut down the device

There is not enough battery power available

Close

It is safe to disconnect the charger

There is battery power available

Close


Removing the battery pack

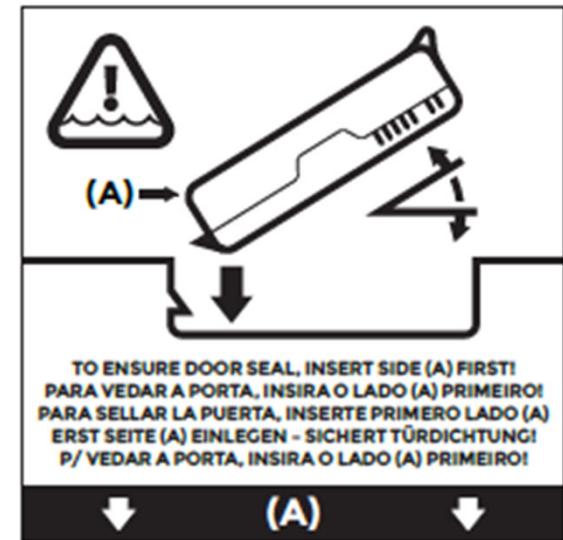
- Access the removable LI-ion from the back of the SHC6400 for replacement or an external battery charger.
- The non-removable internal battery allows you to hot swap the removable battery for another on while the tablet is powered on.
- **To Remove the battery pack:**
 - Push in the battery lock switch, slide to the unlocked position and remove the door.
 - Pull up on the black tab on the battery pack to lift the tabbed edge.
 - Gently remove the battery pack.



Installing the battery pack

- To install the battery pack:
- Hold the battery so that the black tab on the edge of the battery is up and facing the door latch.
- Place the opposite edge into the battery compartment. Push it gently under the two battery catches.
- Rotate the tabbed edge down until the battery sits flat in the compartment.
- Replace the door and press down on it until the latch pops into the locked position.

 **CAUTION:** To avoid damaging the SHC6400 Do not insert the battery pack straight down.



Storage

Power Off the SHC6400

- When the SHC6400 is powered off it stops using battery power and the battery charge level stabilizes.
- In sleep mode, the controller continues to draw a small amount of power.
- If not using the SHC6400 for more than a few days, power it off for storage.

Short-Term Storage

- To store the SHC6400 for a few days:
- **Press and hold the power button** for five seconds until the message “Slide to shut down your PC “ appears.
- **Swipe** to the bottom of the screen to power off the tablet.

Storage

▪ Long-Term Storage

- To store the SHC6400 for more than two weeks.
- Charge the SHC6400 to 50-70%.
- Unplug from external power.
- Power off the SHC6400.
- Wait for the LED to turn off.
- Press and hold the power button for 20 seconds.
- The red LED will start blinking at 10 seconds and will shut off at around 17 seconds. At this point, the internal batteries have been disconnected.
- Take out the removable battery pack and store in a cool dry place.
- When you are ready to power on the SHC6400, replace the battery pack.
- Plug in the SHC6400 with the AC wall charger or USB-C charger and press the power button.

Battery life

- Battery life on a full charge with typical usage is 10-12 hours.
- The Actual amount of battery life can vary significantly depending on the usage of applications such as backlight, Wi-fi, cellular, GNSS and Bluetooth .
- Battery packs typically last 1,000 to 3,000 charging cycles and have a 1-year shelf life.
- Recharge the battery packs at least once per year to prevent the batteries from discharging to a level that might damage or permanently reduce the capacity of the batteries.
- When the tablet is not being charged and is in sleep mode, the tablet draws a small amount of power. This power draw maintains the memory (RAM) of the SHC6400 in the same state it was in when it was awake. Charge the tablet each night or weekend when in sleep mode.
- If the SHC6400 battery reaches a very low charge, the controller will automatically hibernate to prevent further battery drain.
- Data and programs are secure if they have been saved, even if the battery becomes discharged. The SHC6400 does not depend on the battery to store data for extended periods.



CAUTION: Only use batteries designed for the SHC6400. Using non-approved batteries may void your warranty. The SHC6400 must be returned for service to replace an internal battery.

Battery Warnings

- The SHC6400 comes with a lithium-ion rechargeable battery pack. To reduce the risk of fires or burns, **do not** disassemble, crush, shred, puncture, deform, short external contacts or expose the battery pack to fire.
- Do not modify or remanufacture, attempt to insert foreign objects into the battery, immerse or expose to water or other liquids, expose to fire, explosion or other hazards.
- Only use the battery for the SHC6400 as specified.
- Only use the battery with a charging system qualifies with the device per this standard. Use of an unqualified battery or charger may present a risk of fire, explosion, leakage, or other hazard.
- Do not short circuit the battery or allow metallic conductive objects to contact the battery terminals.
- Avoid dropping the battery. If dropped, especially on a hard surface and damage is suspected return it to a service center for inspection.
- For a full list of warnings and specifications please refer to the SHC6400 Field Computer User Manual.

SOKKIA