

USB Driver installation for GNSS Receivers

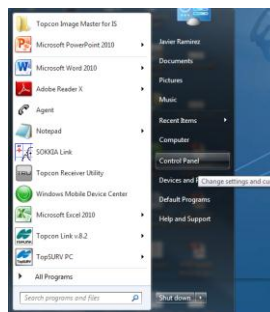


Topcon Technical Support

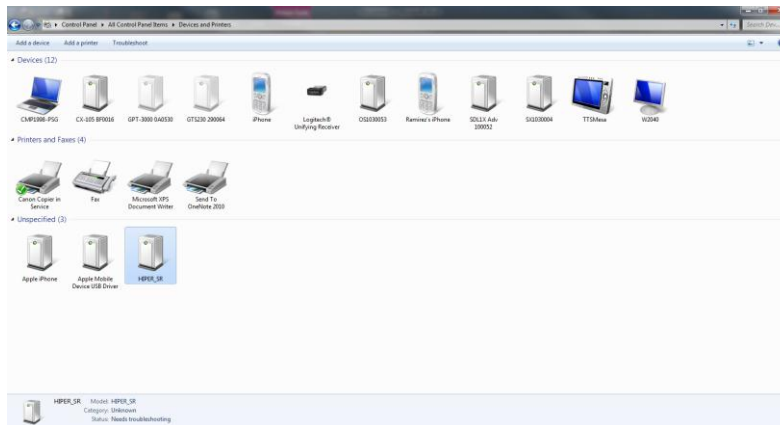
- Writer: Javier Ramirez
- Product: GNSS Receivers

How to upload the Topcon USB driver.

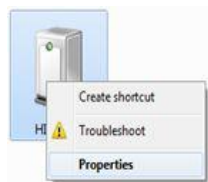
Have the GNSS device plugged to the computer and turn it on, then go to control panel.



Hardware and sound, devices and printers, then RT
Click on the Receiver (or unknown device),



Click on properties



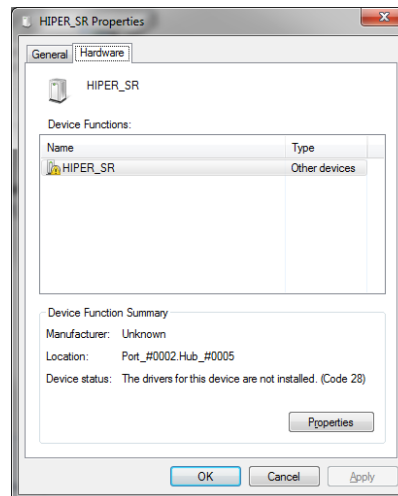
USB Driver installation for GNSS Receivers

Topcon Technical Support

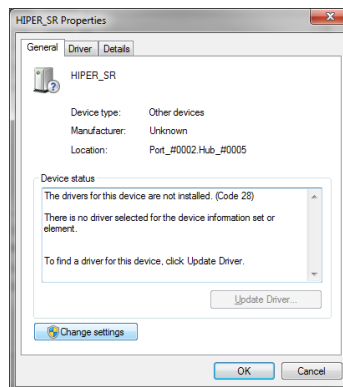
- Writer: Javier Ramirez
- Product: GNSS Receivers



Hardware tab> Properties



General> change settings



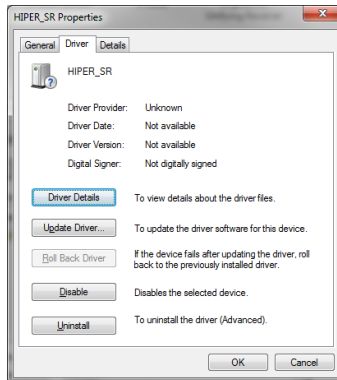
USB Driver installation for GNSS Receivers



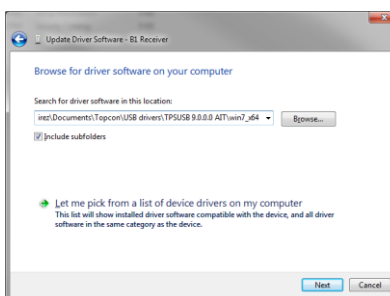
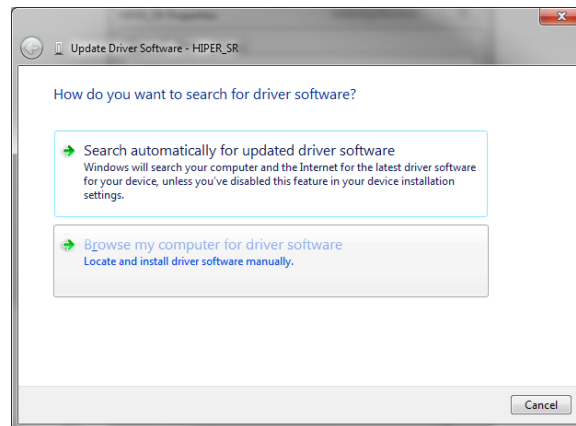
Topcon Technical Support

- Writer: Javier Ramirez
- Product: GNSS Receivers

Then select the Driver tab> click upload Driver



> Browse to the driver file (make sure that is extracted and find your file 64 or 32 bit) and done.



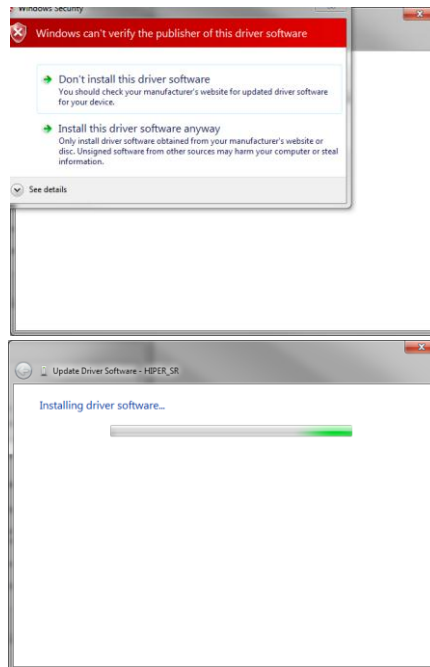
USB Driver installation for GNSS Receivers

Topcon Technical Support

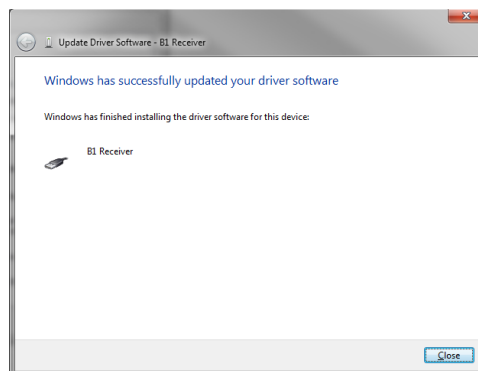
- Writer: Javier Ramirez
- Product: GNSS Receivers



Click on Install this driver



Done.



Happy Surveying!